

# PRS 40 EZ HIRSCHMANN

## Indicator System for Mobile Cranes



PRS 40 EZ Console with A2B display

The PRS 40 EZ's flexible design allows for monitoring single or multiple sensor inputs in wireless and hardwired applications. The system can monitor up to two wireless and one hardwired sensor at the same time, giving the operator the versatility to combine wireless and hardwired sensors. In wireless applications the PRS 40 EZ utilizes Frequency Hopping Spread Spectrum Technology (FHSS) which transmits on one of 25 different channels to ensure accurate and consistent reception of data. FHSS also provides additional protection against interference common to construction job sites.



PRS 40 EZ Sensor Options

### Features

- Used in wireless and hardwired applications
- Monitors combinations of load, boom angle, wind speed, and anti-two block
- Operator pre-set limits with audible and visual warning
- Monitors up to two wireless and one hardwired sensor at one time
- Operating range up to 1000 feet in wireless applications
- Installs quickly and easily on any size mobile crane
- Meets industry standards for indicating devices



Applications on any size mobile crane

## System Specifications

Input Voltage: 10 - 30 volts

Reverse Polarity Protected

Operating Temperature: -20C to +85C

Console Dimensions: 4.80 in. X 4.70 in.

System Rated: IP65

Frequency: 900 Mhz FHSS  
Optional 2.4 Ghz FHSS

Radio Range: Up to 1000 feet

Battery: 4-C Type, Alkaline/Lithium

Battery Life: Alkaline - Up to 7 Months  
Lithium - Up to 14 Months

External mounted antenna

Specifications are subject to change without notice.

## About us

SkyAzúl is an industry leader in the sales and service of information and control systems for construction equipment. Skyazúl specializes in providing system design, logistics and project management for a comprehensive equipment solution.

## Other Products Available From SkyAzúl



### Drum Rotation Indicator

A tactile indication of drum rotation, speed and direction



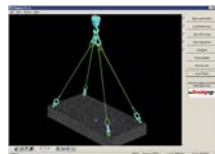
### Sigalarm



Protects equipment and personnel from high voltage lines

### Rigging Pro

Software to create professional and accurate rigging plans



### Hirschmann maestro



Upgrade existing PAT/Hirschmann LMI's to the latest technology

