

Hirschmann Maestro



Upgrade existing LMI to the latest technology

The Hirschmann maestro is an economical upgrade solution for many of the existing PAT load moment indicators that are currently in the field and in need of parts or repair. The Hirschmann maestro provides crane owners with a combination of the latest technology while incorporating many of the existing proven sensors and components. All set up is done through the user-friendly operator's console, with no costly and time consuming re-calibration.



Hirschmann maestro Console

Features

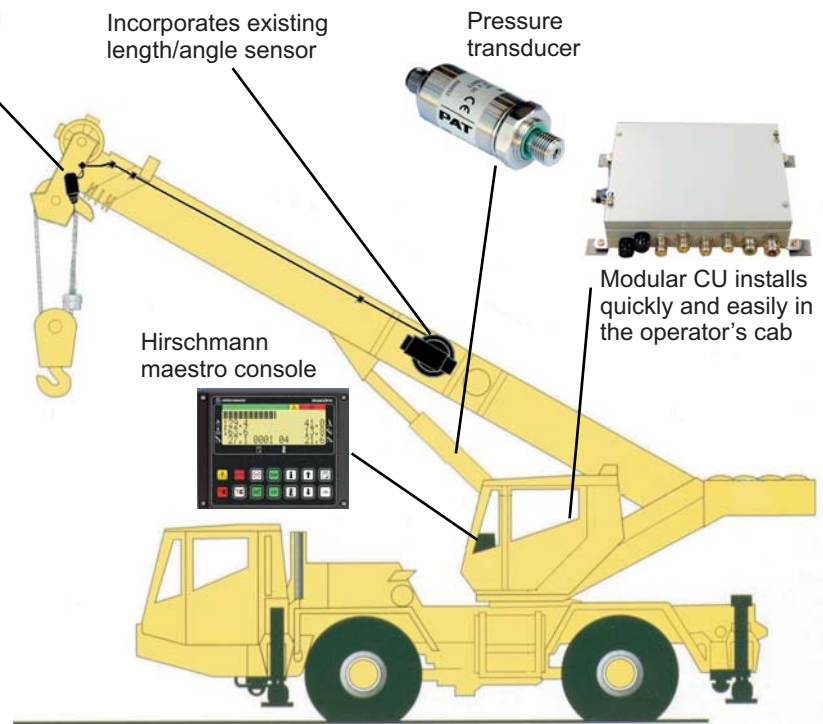
- Upgrades most DS 350 and DS 150 systems
- Uses original software, eliminating the need for re-calibration
- Displays actual and allowable load, boom length, boom angle, and load radius
- Integrated bargraph provides a quick reference of the cranes utilization
- User-friendly console and setup
- Meets SAE and ANSI B-30.5 standards



System Specifications

Power Supply	10 - 30 Vdc
Signal Input	4 - 20 mA / 0 - 5 Vdc
Display	LCD / Illuminated
Console Keypad	Illuminated / 11 buttons 3 indicators
System Rated:	IP 65
Operating Temperature	-4 F to +158 F

Specifications are subject to change without notice.



About us

SkyAzúl is an industry leader in the sales and service of information and control systems for construction equipment. Skyazúl specializes in providing system design, logistics and project management for a comprehensive equipment solution.

Other Products Available From SkyAzúl



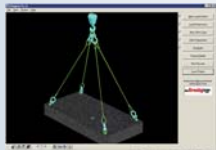
Drum Rotation Indicator
A tactile indication of drum rotation, speed and direction



Sigalarm



Protects equipment and personnel from high voltage lines



Rigging Pro

Software to create professional and accurate rigging plans

PRS 80 EZ



Wireless multi-sensor indicator for mobile cranes

