

High Voltage Power Line Proximity Warning System



SIGALARM is a solid state electronic monitoring system used for detecting the electrostatic field of any AC power line. It provides both audible and visual warning signals to alert the operator and ground personnel when the boom comes within proximity of an energized high-voltage power line.

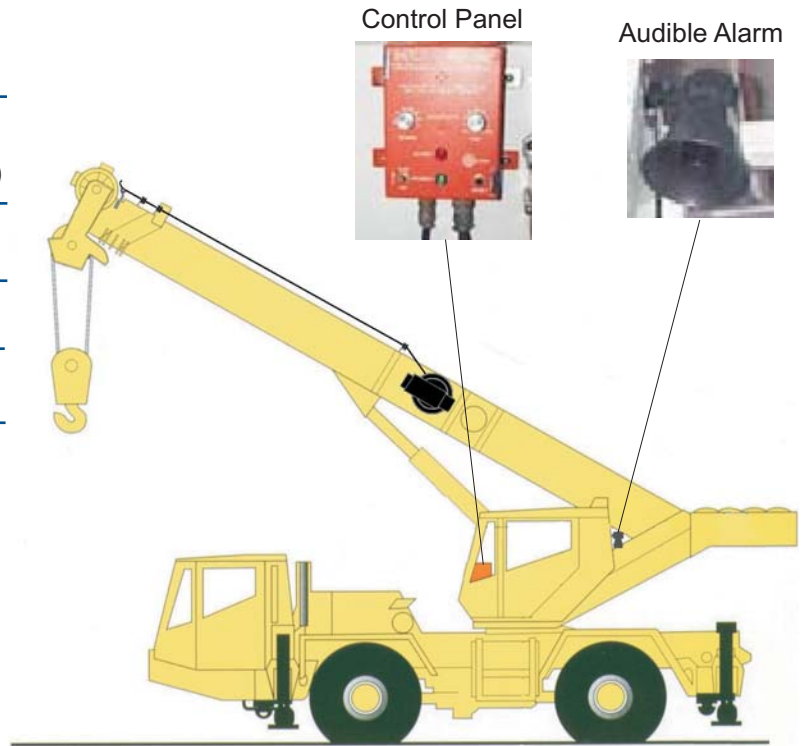


- Simple and precise adjustment of the warning zone.
- Any part of the boom that enters the warning zone will set off the alarm.
- New wireless sensor module option can include monitoring of the load.
- No false alarms due to external interference.
- Provides warning of nearby lightning
- Simple installation.



System Specifications

Power Supply	10 - 15 Vdc
Alarm Outputs	Audio and Visual (external horn and relay)
Electric Field Sensing	50Hz or 60Hz
Dimensions	8" X 7.55" X 4"
Operating Temperature	-29 F to +158 F



About us

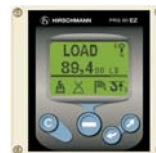
SkyAzúl is an industry leader in the sales and service of information and control systems for construction equipment. Skyazúl specializes in providing system design, logistics and project management for a comprehensive equipment solution.

Other Products Available From SkyAzúl



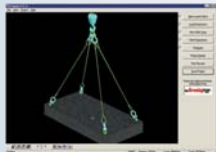
Drum Rotation Indicator

A tactile indication of drum rotation, speed and direction



PRS 80 EZ

Wireless multi-sensor indicator for mobile cranes



Rigging Pro

Software to create professional and accurate rigging plans

PRS 145

Load moment indicator (LMI) for mobile cranes

