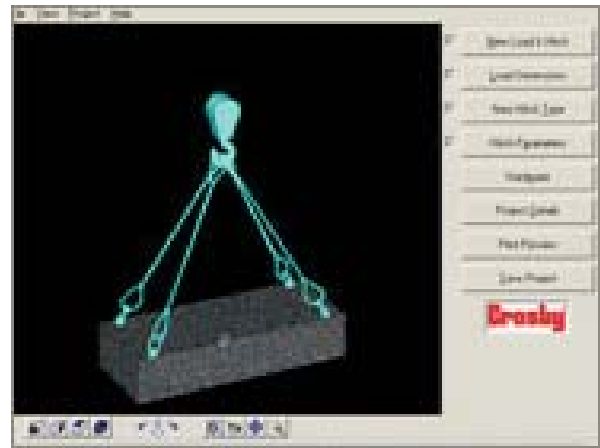


Rigging Pro

Design and evaluate slings and rigging hardware with computerized 3D images

Rigging Pro is a suite of three powerful programs designed to help you create professional, accurate rigging plans. A 3D design program lets you specify the load and hitch type, gives you tension on each of the slings, and checks to see which hardware in your inventory can handle the load. In the 2D SketchPad program you can quickly create a professional rigging drawing for any rigging situation, complete with title block, text, and digging detailed components.



3D view of load and hitch

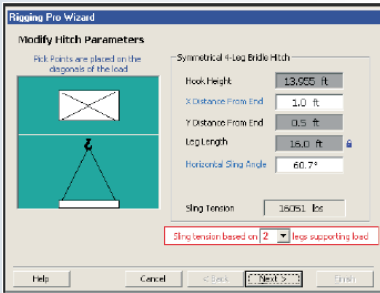
Features

- Automatically develops sling model and applies sling and hardware properties
- Structurally analyzes each element and provides quick confirmation through a color-coded 3D image
- Define load dimensions, hitch type and add hardware such as collector rings, shackles and fitting to the rigging plan through a simple user interface.
- Customized inventory manager
- Provides accurate detailed working drawings of the load and rigging with specifications and bill of materials



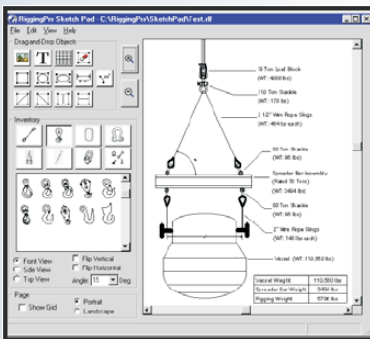
Rigging Pro is an essential tool in all lifts

Specify Load Parameters and Hitch Type and Rigging Pro Does the Rest

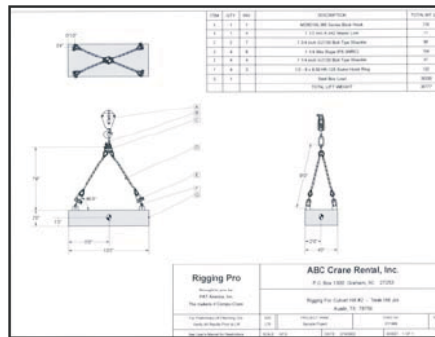


Enter pick points and hitch parameters

Rigging Pro calculates the load center of gravity and sling tensions and displays your rigging assembly in 3D. You can view the load from all sides, experiment with different rigging components, and ensure your hardware will do the job. It even alerts you to potential hazardous situations. Rigging Pro automatically develops the rigging model, calculates load and evaluates capacities. You can select components from a database of **Crosby** hardware or enter hardware and fabrications into a customized inventory for reference. Rigging Pro lets you create accurate drawings of the load and rigging, allowing you to communicate effectively to the field the best way to accomplish the rigging task.



Create fully editable drawings



Preview and print the rigging plan

System Requirements

- Windows 95/98/ME/XP/2000
- Pentium II processor (233 MHz min.)
- 64 MB RAM
- 120 MB hard drive space
- 600 X 800 pixels screen size, high color
- 12x CD-ROM drive

About us

SkyAzúl is an industry leader in the sales and service of information and control systems for construction equipment. Skyazúl specializes in providing system design, logistics and project management for a comprehensive equipment solution.

Other Products Available From SkyAzúl



Drum Rotation Indicator

A tactile indication of drum rotation, speed and direction



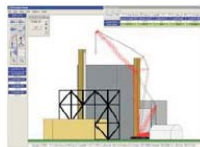
Sigalarm



Protects equipment and personnel from high voltage lines

Compu-Crane

Crane selection and lift planning software



Hirschmann maestro



Upgrade existing PAT/Hirschmann LMI's to the latest technology



SkyAzúl
200 W Main Street, Suite 2A
Middletown, Maryland 21769
301-371-6126 FAX 301-371-0029
info@skyazul.com

www.skyazul.com

