

# PRS 80 EZ HIRSCHMANN

## Wireless Multi-Sensor Indicator for Mobile Cranes



PRS 80 EZ console and load display



PRS 80 EZ sensor options



PRS 80 EZ A2B and wind speed displays

The PRS 80 EZ's flexible design allows for monitoring single or multiple sensor inputs. The sensor inputs are displayed on a large back-lit graphic display which is capable of displaying up to seven sensors at one time. The PRS 80 EZ utilizes Frequency Hopping Spread Spectrum Technology (FHSS) which transmits on one of 25 different channels to ensure accurate and consistent reception of data. FHSS also provides additional protection against interference common to construction job sites.

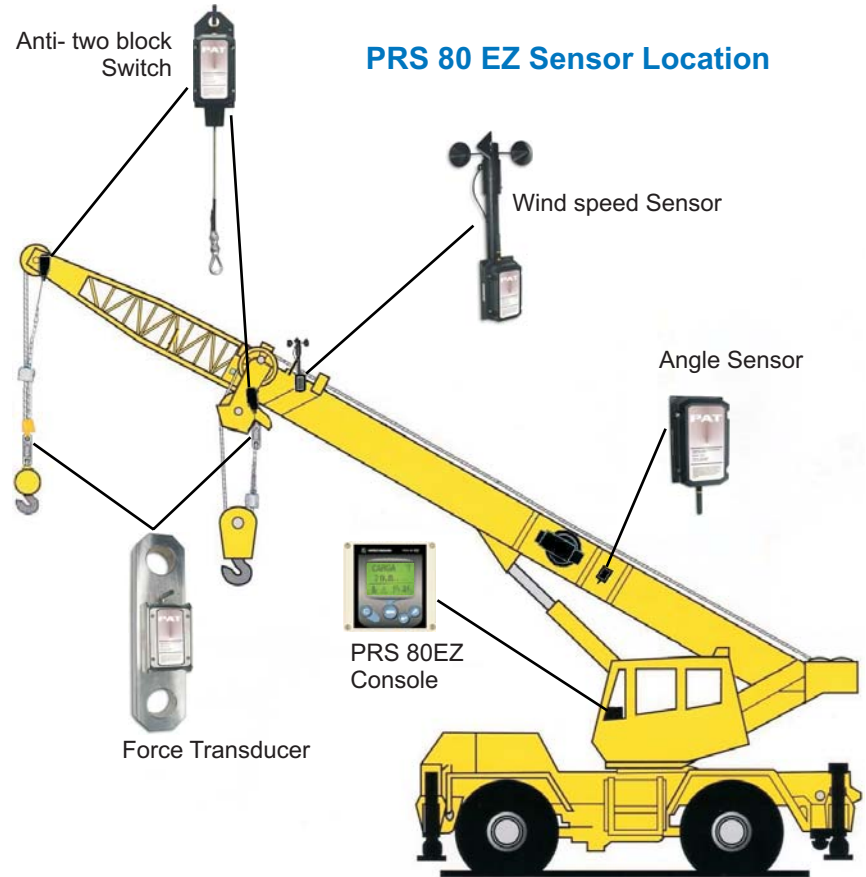
### Features

- Displays up to seven sensors at one time
- Monitors combinations of load, boom angle, wind speed, and anti-two block
- Operator pre-set limits with audible and visual warning
- FHSS - Frequency Hopping Spread Spectrum Technology
- Operating range up to 1000 feet
- Used on any size mobile crane
- Installs quickly and easily in the field

## System Specifications

Input Voltage:	10 - 30 volts
Reverse Polarity Protected	
Operating Temperature:	-20C to +85C
Console Dimensions:	75mm x 110mm 2.95in x 4.33in
System Rated:	IP65
Frequency:	900 Mhz FHSS Optional 2.4 Ghz FHSS
Radio Range:	Up to 1000 feet
Battery:	4-C Type, Alkaline/Lithium
Battery Life:	Alkaline - Up to 7 Months Lithium - Up to 14 Months

Specifications are subject to change without notice.



## About us

SkyAzúl is an industry leader in the sales and service of information and control systems for construction equipment. Skyazúl specializes in providing system design, logistics and project management for a comprehensive equipment solution.

## Other Products Available From SkyAzúl



### Drum Rotation Indicator

A tactile indication of drum rotation, speed and direction



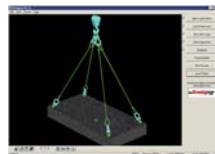
### Sigalarm



Protects equipment and personnel from high voltage lines

### Rigging Pro

Software to create professional and accurate rigging plans



### Hirschmann maestro



Upgrade existing PAT/Hirschmann LMI's to the latest technology



SkyAzúl  
200 W Main Street, Suite 2A  
Middletown, Maryland 21769  
301-371-6126 FAX 301-371-0029  
info@skyazul.com

[www.skyazul.com](http://www.skyazul.com)

