

EI65  HIRSCHMANN  

Geometry and Load Indicator

The EI 65 indicator system was developed in response to the needs of the crane owner to improve the efficiency and productivity of their operations. The system displays all geometric and load data along with the hoist selection and parts of line. With this information and the crane's load chart the operator has the information needed to work within the crane's working limits.



Ei65 Console

Characteristics

- Continuous display of boom angle, length, radius and load.
- Operator pre-set limits with audible and warning.
- Set up and calibration via user-friendly console.
- Alerts operator to an impending two block condition.
- Used on any size mobile crane.
- Optional function control lockout.
- Meets Cal-OSHA, SAE and ANSI B-30.5 Requirements.

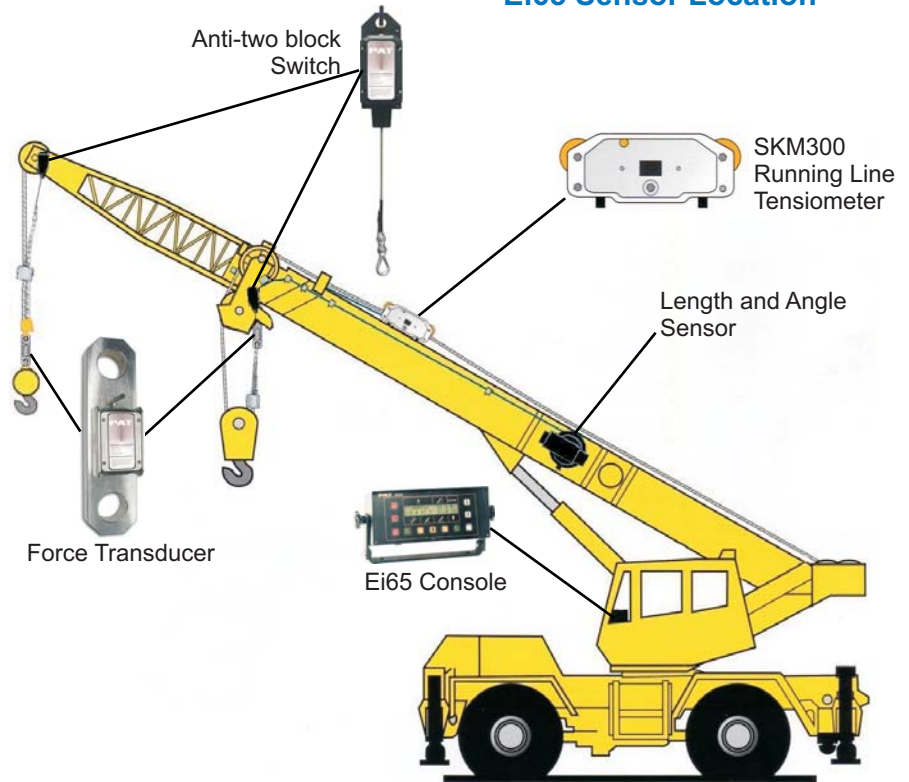


System Specifications

Power Supply	10 - 30 Vdc
Signal Input	0 - 5 Vdc
Display	2 Line x 16 Character LCD
Console Dimensions	260 x 100 x 151 mm
System Rated:	IP 65
Operating Temperature	-25 C to +70 C

Specifications are subject to change without notice.

Ei65 Sensor Location



About us

SkyAzúl is an industry leader in the sales and service of information and control systems for construction equipment. Skyazúl specializes in providing system design, logistics and project management for a comprehensive equipment solution.

Other Products Available From SkyAzúl



Drum Rotation Indicator

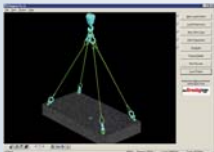
A tactile indication of drum rotation, speed and direction



Sigalarm



Protects equipment and personnel from high voltage lines.



Rigging Pro

Software to create professional and accurate rigging plans

Hirschmann maestro



Upgrade existing PAT/Hirschmann LMI's to the latest technology



SkyAzúl
 200 W Main Street, Suite 2A
 Middletown, Maryland 21769
 301-371-6126 FAX 301-371-0029
 info@skyazul.com

www.skyazul.com

