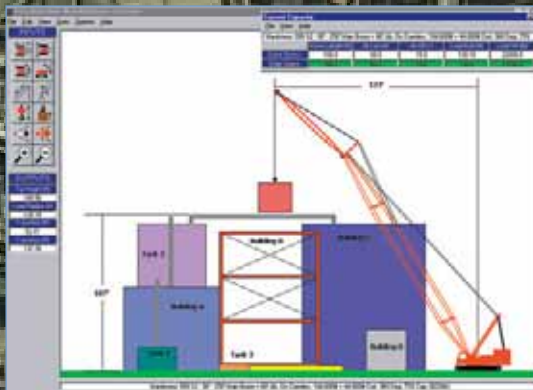




# Compu-Crane

Crane Selection & Planning Software (CSPS)

## Graphically Perform Every Lift Before You Start the Job



- Accurately plan lifts and select cranes for every job
- Automatically lists appropriate cranes/configurations
- Generates crane specs, capacity charts and site views
- Collision detection for boom, jib, and tail swing
- Allows rotation of carrier to any relative load position
- Easy-to-use dimensioning to identify objects/obstructions
- Displays rear obstacles

# See the Lift Before You Start the Job

Think of how much time is spent examining load charts, making drawings and planning lifts. Compu-Crane eliminates all of this by quickly searching every single line of every load chart for every crane in your fleet and providing a list of cranes and configurations optimal for each lift. You'll never have to perform these time-consuming tasks again.

Even if you know exactly which boom and jib length to use on a specific job, how do you show it? Now you can graphically create the job, plan the

lift, select the crane, print drawings and document the lift...before starting the job. Compu-Crane will save you many hours, even days, on every project. And it couldn't be easier to use. Just enter some basic information about the site into your computer. Compu-Crane creates the site for you on-screen and selects the appropriate cranes and configurations. You see the lifting task in detail with the selected crane and all obstructions. You can simulate the lift, check all clearances, add details to the job site, and print out everything for presentations, bids or documentation.

# Customized for your fleet

Compu-Crane develops custom packages with load charts and detailed, accurate graphics of every crane in the fleet. Users never have to enter any crane dimensions—all of that work is already done. You can customize the program with an unlimited

number of cranes from any manufacturer. Compu-Crane works with all current Windows(tm) operating systems and requires no previous experience with computer-aided design (CAD) or planning software.



## Enter the Parameters of the Job

Compu-Crane creates a virtual job site right on your computer screen! The computerized replica allows you to specify load weight, obstruction elevation, and required lift depth. Dimensions and weighs are accessible in both English and metric(SI) systems.

Inputs	
# of Obstructions	1
a1 - Ob #1 Height (ft)	100.0
b1 - Ob #1 Depth (ft)	45.0
c - Lift Depth (ft)	40.0
d - Lift Offset (ft)	0.0
e - Load Elev (ft)	105.0
Load Height (ft)	10.0
Load Cylinder Radius (ft)	5.0
Load Weight (lb)	1500.0
Boom Cyl Radius (ft)	5.0
Ceiling Height (ft)	0.0
Rear Obstruction Dist (ft)	0.0
<input checked="" type="radio"/> Telescopic <input type="radio"/> Lattice	

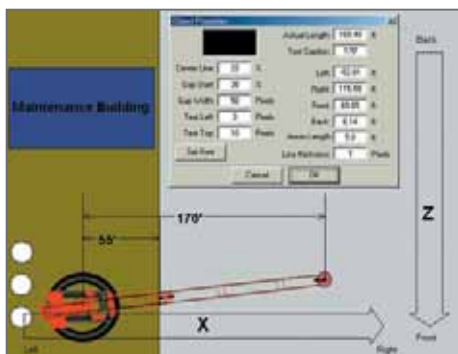
## Compu-Crane Chooses the Right Crane

Based on the job site variables, Compu-Crane searches your customized list of cranes and finds the best match of the job. The chosen crane's load chart is displayed, showing specifications such as boom length, jib length, load radius, jib offset and capacity.

The following cranes can perform the lift. Please select a crane to continue.							
Crane						Capacity	
Grove RT180	114' Main Boom (Full Power)	40' Telescoping Offsettable Jib 100% Outriggers	Full Cnt.	360 Deg	95% Cap	41300	
Grove RT180	114' Main Boom (Full Power)	40' Telescoping Offsettable Jib 50% Outriggers	Full Cnt.	360 Deg	95% Cap	41300	
Grove RT180	114' Main Boom (Power Pinned)	40' Telescoping Offsettable Jib 100% Outriggers	Full Cnt.	360 Deg	95% Cap	41300	
Grove RT180	114' Main Boom (Power Pinned)	40' Telescoping Offsettable Jib 50% Outriggers	Full Cnt.	360 Deg	95% Cap	41300	
Grove RT180	114' Main Boom (Power Pinned)	90' Fixed Jib	100% Outriggers	Full Cnt.	360 Deg	95% Cap	36600
Grove TM3100	147' 6" 5' Sect Main Boom (Mode B)	56' Offsettable Folding Jib	50% Outriggers	DR Cnt.	360 Deg	95% Cap (SAE)	33800
Grove TM3100	147' 6" 5' Sect Main Boom (Mode B) with Aux Hoist / Htg Struct	56' Offsettable Folding Jib	50% Outriggers	DR Cnt.	360 Deg	95% Cap (SAE)	33800

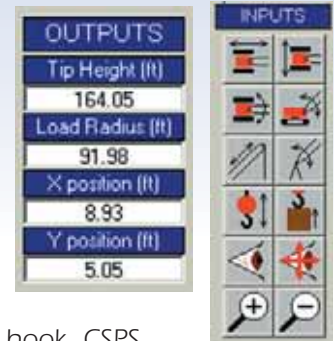
## Modify the Job Sites

Compu-Crane allows you to easily add details to your job sites, letting you check tail-swing clearances, outrigger positioning, and distances from obstacles such as pipes or power lines that may present problems during a lift.



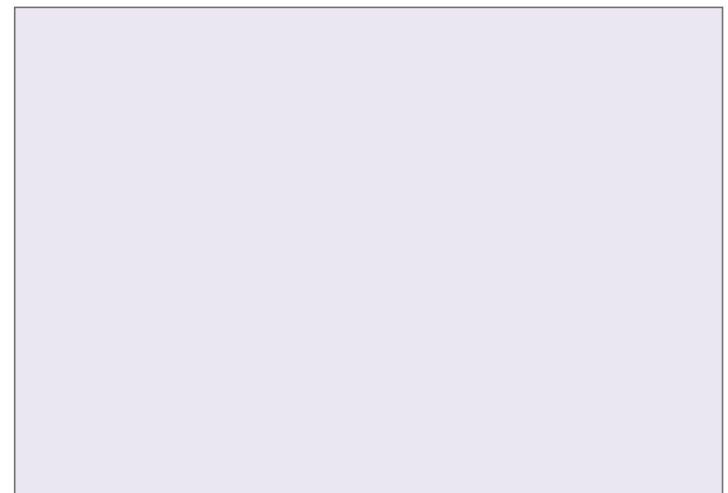
## Execute the Lift

The **Lift Display** graphically displays the selected crane (in both plan and elevation view) in the appropriate configuration with the current job site. From boom to hoist to travel, Compu-Crane performs all the functions of the real crane on your screen. Move the crane through the job site. Make the lift. You have a virtual preview of the job—in less than ten minutes. Using the simple CPCS interface, you can rotate and position the crane, swing the boom, change the boom angle, and raise or lower the crane hook. CPCS shows you the load radius and tip height at all times during the lift.



## Collision Detection

The advanced mode displays distances between the crane and the load, the crane and any obstructions, and the load and any obstructions. Users can specify a clearance distance to be maintained between the job site



obstructions (or load) or any part of the crane (boom, jib, counterweight, gantry, superlift, etc.). When this clearance distance is violated, both objects violating the clearance are highlighted (an obstruction and the jib, for instance).

## Print the Lift

Compu-Crane gives you an accurate working drawing of the lift you need to execute. Thanks to Compu-Crane, it's quick and easy. Fax the drawing to a client. Use it in rigging plans. The opportunities are virtually endless.

## System Requirements

To run and install CSPS, you must have an IBM-compatible PC or network with the following minimum specifications:

- 200 MHz or higher recommended
- A VGA driver and monitor (Super-VGA recommended)
- A hard drive with at least 80 megabytes of free space
- At least 32 megabytes of RAM
- Microsoft Windows 95, Windows 98, Windows NT 4.0, Windows 2000, Windows ME or SoftWindows on suitable Macintosh computers



### Crane Operator Aids

These products provide critical data on a continuous basis to crane operators. Improve efficiency and productivity of mobile crane operations..



### Load Totalization

Weighing and totalization systems designed to improve loader efficiency and productivity.

## Global Support

PAT offers global product support. Our crane products, scales and software are designed and built to strict technical and performance standards. PAT puts years of engineering experience to work in order to solve the application problems of every customer.



### Payload Control Systems

Provide in-cab display of load and total load to prevent overload.



### Traffic

Complete line of weighing systems, traffic counters and related products.



PAT

PAT America, Inc.  
 1665 Orchard Drive, Chambersburg, PA 17201  
 Phone 800-348-0620 • Fax 425-821-6575  
 E-mail [info@patamerica.com](mailto:info@patamerica.com) • [www.patamerica.com](http://www.patamerica.com)